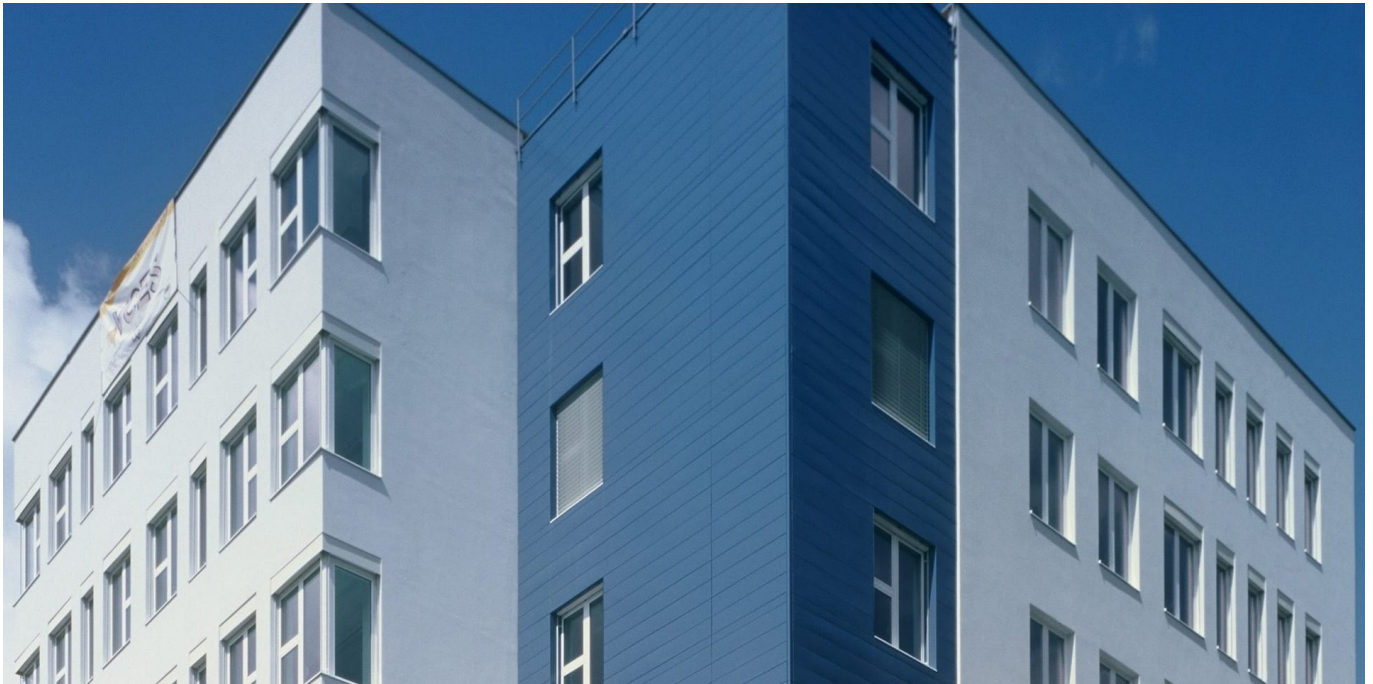


# Teaching Hospital Královské Vinohrady – S1 Hospital Building



Location

**Prague**

Investor

**Teaching Hospital  
Královské Vinohrady**

Construction period

**05/2002 – 03/2005**

Type of construction

**Health care**

Scope of services

**Construction**

The S1 building is a hospital structure housing three X-ray examination rooms, a haemodialyses unit, an intensive care metabolic unit, an internal ward, a surgery ward, an intensive care neurosurgery unit and a neurosurgery operation room. There are 98 beds in the new S1 building, three operation rooms and seven examination rooms. There is a sub-

[www.vces.cz](http://www.vces.cz)



Shared **innovation**

basement under part of the building which has six above ground storeys. The seventh storey is receding. At the 2nd above-ground storey level, the building is connected with the S building with a covered passageway. In front of the entrance hall, there is a roofed area for ambulances and three places for short parking. In the south part, the building is based on bored piles and in the north on foundation slabs. The load-bearing frame of the buil...

## In numbers

3

operation rooms

7

examination  
rooms

98

in-patient hospital  
beds